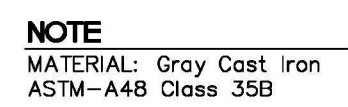


MINIMUM HORIZONTAL SEPARATION REQUIREMENTS FOR POTABLE WATER, REUSE, STORMWATER AND SEWER LINES

ENGINEERING STANDARDS 2022			
REVISIONS		ENGINEERING DIVISION CITY OF POMPANO BEACH	MIN. HORIZONTAL SEPARATION FOR SANITARY SEWER
BY	DATE		
S.S.	01/30/12		
			DATE: JUNE 2022
			DWG. NO.
		SCALE: N.T.S.	209-1



SEWER BOX AND COVER - HEAVY TRAFFIC

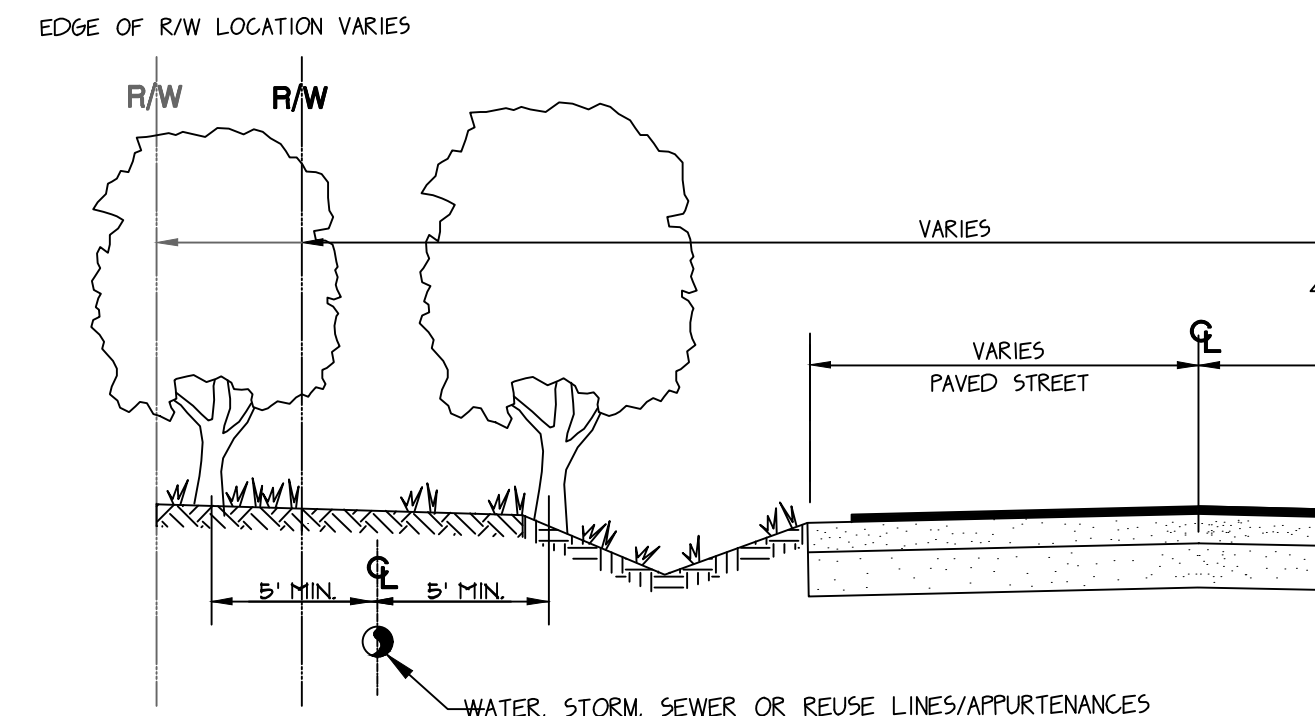
ENGINEERING STANDARDS 2025			
REVISIONS		ENGINEERING DIVISION CITY OF POMPANO BEACH	SEWER BOX AND COVER HEAVY TRAFFIC
BY	DATE		
S.S.	12/06/19		
		SCALE: N.T.S.	DATE: JUNE 2022 DWG. NO. 210-3



NOTES

PLEASE NOTE THAT AS PER CITY ORDINANCE(S) 50.02(A) (4) AND 100.35(E), STREET TREES SHALL NOT BE PLACED ON TOP OF OR 5' OF EITHER SIDE OF ANY CITY OWNED UTILITY INFRASTRUCTURE. ALSO, PLEASE NOTE THAT NO TREES SHRUBBERY OR OBSTRUCTION SHALL BE PLACED WITHIN A 3' RADIUS OF A CITY OWNED LATERAL CLEANOUT OR WATER & OR REUSE METER

ENGINEERING STANDARDS 2022			
REVIEWS		ENGINEERING DIVISION CITY OF POMPANO BEACH	TYPICAL SCREEN FOR UTILITIES
BY	DATE		
TCW	APRIL 2010		
SCALE: N.T.S.		APPROVED BY:	DATE: MAY 2022 DWG. NO. 315-1



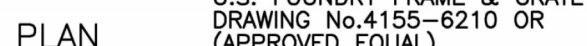
TREE LOCATIONS REQUIRED IN PUBLIC R/W ON UTILITY EASEMENTS

NOTES

PLEASE NOTE THAT AS PER CITY ORDINANCE(S) 50.02(A) (4) AND 100.35(E), STREET TREES SHALL NOT BE PLACED ON TOP OF OR 5' OF EITHER SIDE OF ANY CITY OWNED UTILITY INFRASTRUCTURE. ALSO, PLEASE NOTE THAT NO TREES SHRUBBERY OR OBSTRUCTION SHALL BE PLACED WITHIN A 3' RADIUS OF A CITY OWNED LATERAL CLEARCUT OR WATER & OR REUSE METER.

ENGINEERING STANDARDS 2022			
REVISONS		ENGINEERING DIVISION CITY OF POMPANO BEACH	REQUIRED TREE LOCATIONS
BY	DATE		
SCALE: N.T.S.		APPROVED BY:	DATE: MAY 2022 DWG. NO. 316-1

PROJECT NUMBER	14267.00
----------------	----------



NOTES:

1. STEEL PER FDOT INDEX 425-010.
2. MINIMUM 18" SUMP.
3. TYPE II CEMENT, MINIMUM 4000 PSI COMPRESSIVE STRENGTH AT 28 DAYS.

ENGINEERING STANDARDS 2025			
REVISIONS		ENGINEERING DIVISION CITY OF POMPANO BEACH	PRECAST DRAINAGE STRUCTURE
BY	DATE		
A.S.	04-24		
		SCALE: N.T.S.	DATE: APRIL 2024 DWG. NO. 400-1A



TYPE "C" INI FT

RECOMMENDED MAXIMUM PIPE SIZE
2'-0" WALL-18" PIPE
3'-1" WALL-24" PIPE

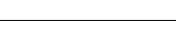
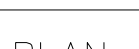
ENGINEERING STANDARDS 2022			
REVISIONS BY DATE S.S. 09-11		ENGINEERING DIVISION CITY OF POMPANO BEACH	TYPE "C" INLET
		SCALE: N.T.S.	DATE: JUNE 2022 DWG. 400-1



TYPE "D" INI FT

RECOMMENDED MAXIMUM PIPE SIZE
3'-1" WALL-24" PIPE
4'-1" WALL-36" PIPE

ENGINEERING STANDARDS 2022			
REVISIONS		ENGINEERING DIVISION CITY OF POMPANO BEACH	TYPE 'D' INLET
BY	DATE		
S.S.	09-11		
SCALE: N.T.S.		DATE: JUNE 2022 DWG. NO. 401-1	



TYPE "E" INLET

RECOMMENDED MAXIMUM PIPE SIZE

3'-0" WALL	24" PIPE
4'-6" WALL	42" PIPE

ENGINEERING STANDARDS 2022			
REVISONS		ENGINEERING DIVISION CITY OF POMPANO BEACH	TYPE 'E' INLET
BY	DATE		
S.S.	09-11		
		SCALE: N.T.S.	DATE: JUNE 2022 DWG. NO. 402-1